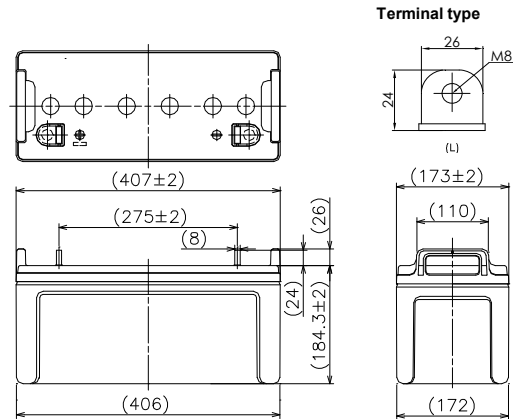


For standby power supplies
 Expected trickle life: 6 years at 25°C
 10 years at 20°C



※The printed trademark and color of the battery's picture maybe different from the object, please make the object as standard.

■Dimensions(mm)



Battery case resin: Flame-retardant (UL94V-0)

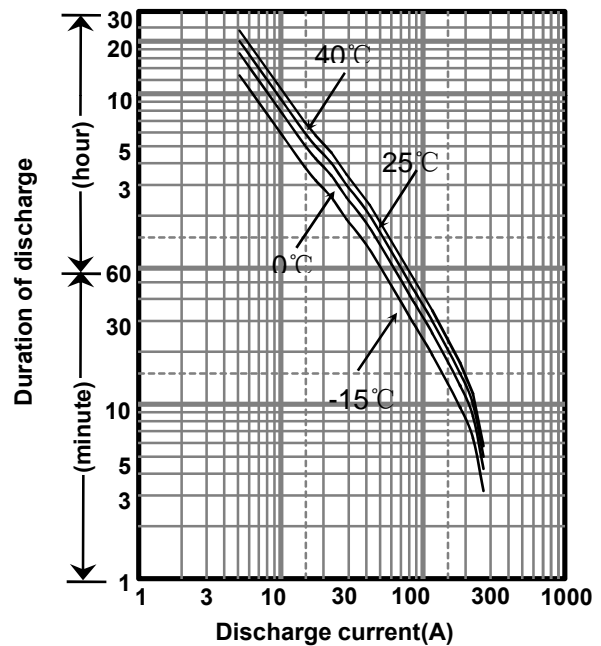
■Specifications

Nominal Voltage		12V
Rated Capacity(20HR)		100Ah
Dimensions	Length	407 mm
	Width	173 mm
	Height	184 mm
	Total height	210 mm
Approx. Mass		27.5 kg
Terminal		M8 L型

■Characteristics

Capacity (25 °C)	20 hour rate	100Ah
	10 hour rate	90Ah
	3 hour rate	76Ah
	1 hour rate	56Ah
Internal Resistance (25 °C)	Fully charged battery (Approx.IR)	5 mΩ
Temperature Dependency of Capacity (20 hour rate)	40 °C	102%
	25 °C	100%
	0 °C	85%
	-15 °C	65%
Self Discharge (25 °C)	After 3 months	91%
	After 6 months	82%
	After 12 months	64%

■Duration of discharge vs. discharge current



Wattge values in the table are average instead of guaranteed value, please consider appropriate redundancy by application.

■Watt Table(25°C)

Cut-off V	5min	10min	15min	20min	30min	45min	1h	1.5h	2h	3h	4h	5h	6h	10h	20h
9.6V	2667	2258	1834	1567	1168	868	692	493	423	292	226	183	154	92.3	47.0
9.9V	2619	2232	1815	1559	1155	847	674	480	412	287	221	177	150	89.2	46.7
10.2V	2455	2174	1778	1533	1142	839	655	471	406	282	216	172	146	88.1	46.1
10.5V	2200	2014	1655	1456	1117	826	637	461	398	277	214	171	144	87.1	45.8
10.8V	2100	1762	1513	1389	1057	796	628	439	389	272	209	167	141	86.0	45.5

(Wattage/Battery)

■Ampere Table(25°C)

Cut-off V	5min	10min	15min	20min	30min	45min	1h	1.5h	2h	3h	4h	5h	6h	10h	20h
9.6V	303	206	154	133	100.0	74.8	60.8	45.0	39.4	28.0	21.7	18.5	15.5	9.41	5.13
9.9V	300	204	152	131	98.9	73.0	59.9	43.9	39.2	27.4	21.6	18.0	15.4	9.31	5.03
10.2V	292	198	149	130	97.8	72.3	58.8	43.0	38.2	27.2	21.4	17.8	15.2	9.21	5.01
10.5V	270	184	139	123	95.6	71.1	57.6	42.1	36.9	26.8	21.3	17.7	15.0	9.10	5.00
10.8V	236	161	127	118	90.5	68.6	55.3	40.1	34.4	25.7	20.6	16.9	14.6	9.00	4.92

Ampere values in the table are average instead of guaranteed value, please consider appropriate redundancy by application.

(Ampere/Battery)

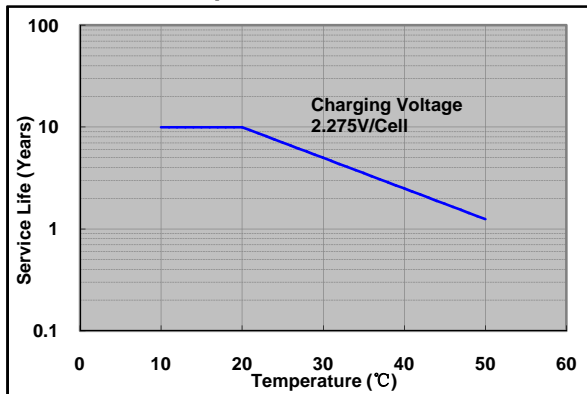
Charging Method (25°C)

Trickle use	Control voltage:13.6-13.8V Initial current:15.0A or smaller
-------------	--

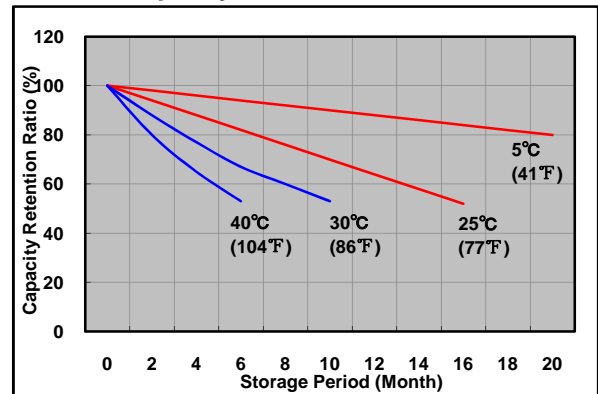
Cut off voltage

Discharge current	5.00A-20.0A	20.0A-50.0A	50.0A-100A	100A-200A	200A-300A
Cut off voltage(V)	10.5	10.2	9.9	9.3	8.7

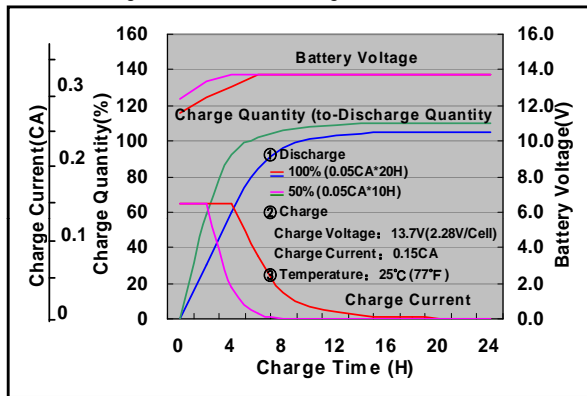
Influence of Temperature on Trickle life



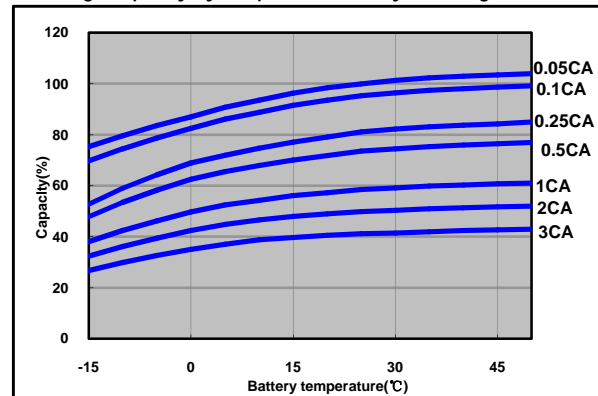
Residual capacity test result



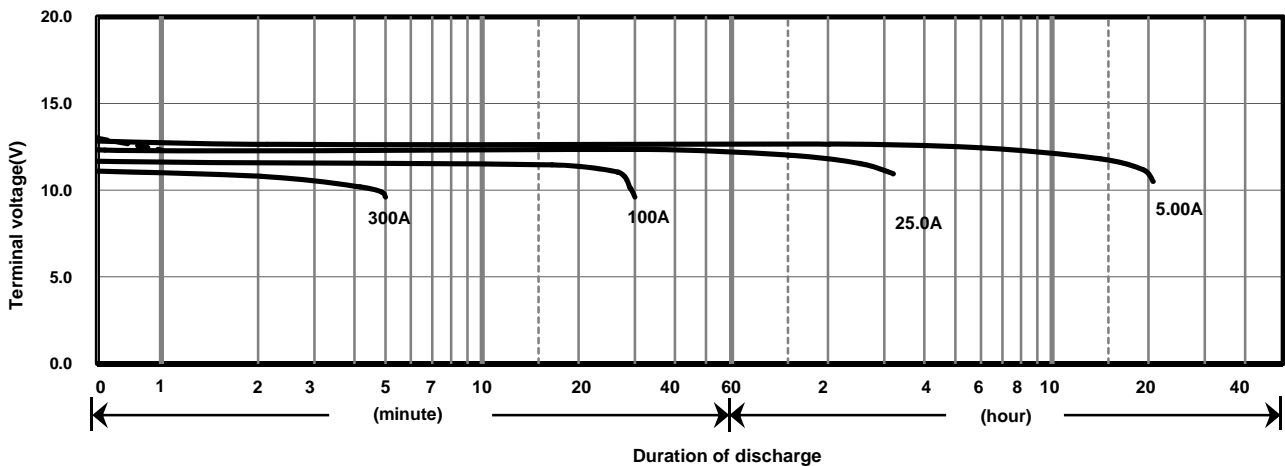
Constant-voltage constant-current charge characteristics for Trickle use



Discharge capacity by temperature and by discharge current



Discharge characteristics(25°C)



Caution

Due to the potential energy stored in the batteries, Please read 《Precautions for handling the Rechargeable Valve Regulated Lead Acid Batteries》 before using batteries. If improper handling or use of the batteries without understanding 《Precautions for handling the Rechargeable Valve Regulated Lead Acid Batteries》 may result in bodily injury caused by electrolyte leakage, heat generation, or explosion.

Panasonic Battery (Shenyang) Co., Ltd.

NO. 17 Hunhe 20Th Street, Shenyang Economic & Technical Development Zone, 110142 China

Tel: 86 24 25818921

Fax: 86 24 62786318

Website: <http://www.panasonicbattery.cn>

2019.05